

# Musculo-Skeletal in UltraFast Ultrasound Imaging

Dynamic Assessment of the Musculo-Skeletal Systems

## SUPERSONIC™ MACH™ SERIES

ultrasound systems leverage 13 years of clinical expertise to help you handle **exams with ease and confidence.**

Powered by the next generation of UltraFast imaging and featuring streamlined ergonomics, **both efficiency and comfort are maximized.**

It delivers a new set of transducers which enhances overall diagnostic capabilities for the musculo-skeletal systems.



up to  
**1200** kPa (20 m/s)

more than  
**200** Clinical Publications

## A Complete Set of Transducers

### L18-5 LINEAR

5-18 MHz

High frequency  
| Excellent detail and definition  
| Near field

### L10-2 LINEAR

2-10 MHz

Broadband | Outstanding image quality | Near and far field

### LH20-6 LINEAR

6-20 MHz

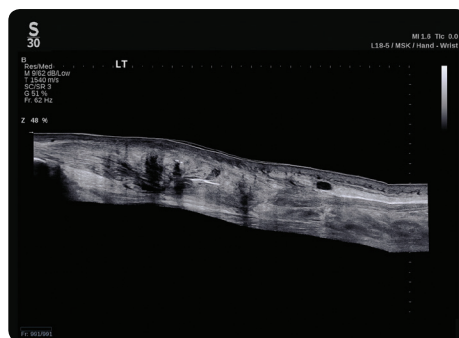
High-performance | Exceptional image quality | Unparalleled spatial resolution | 192 elements  
| Small footprint

# Next Generation UltraFast Imaging



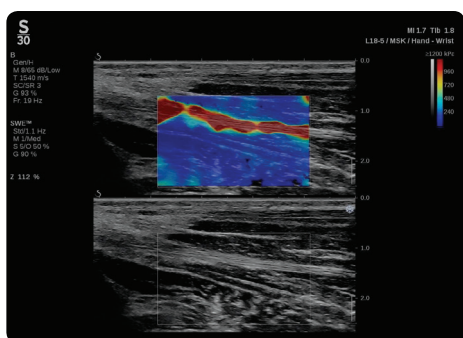
## B-Mode Imaging

- Signal purity re-invented providing the next generation of spatial and contrast resolution with an excellent structure continuity;
- Optimized results with incredible definition and allows for compounding in B-mode and color Doppler simultaneously;
- Unparalleled image quality of muscles, tendons, ligaments, joints and soft tissue;
- A remarkable wide imaging mode on all linear transducers.



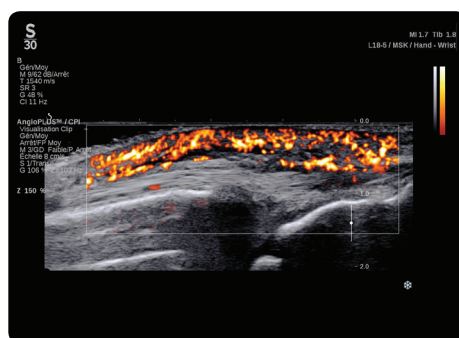
## Panoramic

- Extended field of view to assess larger organs or abnormalities in their entirety for improved diagnostic confidence;
- Adapted to all kinds of MSK examinations thanks to its availability on all linear transducers;
- Compatible with advanced measurements and tools for productivity enhancement.



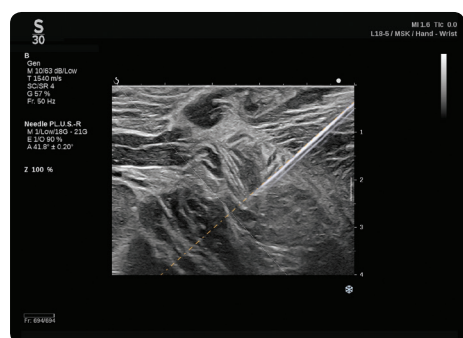
## ShearWave™ PLUS

- Analyze real-time tissue stiffness up to **1200 kPa** (20 m/s) without compromise on B-mode imaging;
- Outstanding frame rate up to 4 Hz for all examinations and increased penetration to visualize deep lesions;
- Screening and assessment of both inflammatory and mechanical tendinopathies.



## Angio PLUS

- Based on plane wave imaging technology offering enhanced visualization of blood flow;
- Advanced exploration and analysis of the vascular architecture of musculoskeletal unit and tendon lesions.



## Needle PLUS

- Precízen és megbízatosan végezzen invazív eljárásokat (szteroid vagy PRP injekciókat) a mintavételi tű láthatóságának valós időben történő javításával és a pályájának előrejelzésével, miközben megőrzi a kiváló 2D képminőséget;
- További kényelem a felhasználó és a beteg számára a gyorsabb beavatkozási eljárások révén.

**BIOMED ELECTRONIC Kft.**

HUNGARY

Mob: +36 30 952 7610

arpad.barta@biomedelectronic.hu [www.biomedelectronic.hu](http://www.biomedelectronic.hu)

